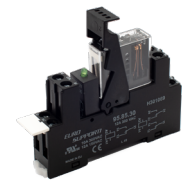


Mounting rail socket SRD-SGR2 for SGR282 ZK

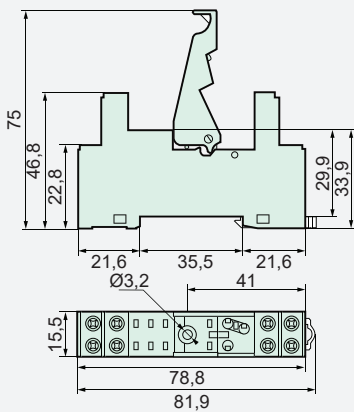


Features

- Plug-in socket with screw terminals
- For relay series SGR282 ZK
- With plastic retaining bracket
- Identification plate (1 piece)
- Mounting on 35 mm mounting rail (IEC 60715)
- Central fastening with M3 screw



Dimensions



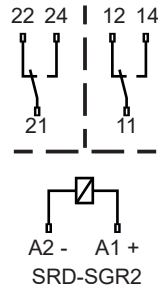
[mm]

Technical data

Limit continuous current*	8 A
Rated voltage	300 VAC
Connections:	
- Cross sections for wire	2 x 2,5 mm ²
- Cross sections for stranded wire	2 x 1,5 mm ²
- Torque	max. 0,8 Nm

*note max. contact load in the relay data sheet

Circuit diagram



Insulation data

Basic insulation at	250 VAC
--- Air and creepage distance	>4 mm
Test voltage	2500 V _{rms} / 1 min
Creepage resistance	CTI 250
Pollution degree	2
Overvoltage category	III

Additional data

Weight	approx. 40 g
Ambient temperature	-25°C ... +70°C

Tests, regulations, standards

Approvals	cULus
UL File	E140923
Insulation group according to IEC 60664-1	250 VAC
Standards	IEC 61810-1, UL 508

Options, Accessories

Display and protection modules	SRD-SGR2-M01, SRD-SGR-M03, SRD-SGR-M05
--------------------------------	--

Mounting instructions

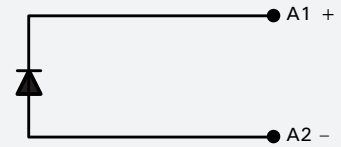
Mounting	on 35 mm mounting rail (IEC 60715)
Mounting	with central fastening Screw M3
- Torque	max. 1,28 Nm

Product key

SRD	SGR2
Socket type	Relay series

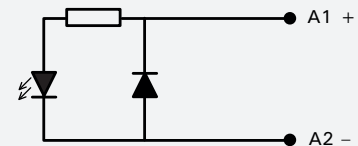
Module SRD-SGR2-M01

- For mounting rail socket SRD-SGR2 and SRD-SIS3
- Integrated freewheeling diode
- Suitable for 6 VDC to 230 VDC (+ at terminal A1)



Module SRD-SGR2-M03

- For mounting rail socket SRD-SGR2 and SRD-SIS3
- Integrated freewheeling diode
- Green LED with current limiting resistor
- Suitable for 6 VDC to 24 VDC(+ at terminal A1)



Module SRD-SGR2-M05

- For mounting rail socket SRD-SGR2 and SRD-SIS3
- Green LED with current limiting resistor
- Integrated reverse polarity protection
- Suitable for 6 VDC to 24 VDC (+ at terminal A1)

