

### General Description

TMR1383 is a digital omnipolar magnetic switch that integrates TMR and CMOS technology in order to provide a magnetically triggered digital switch with high sensitivity, high speed, and low power consumption. It is designed for use in applications that are both power-critical and performance-demanding. It contains a push-pull TMR sensor bridge and CMOS signal processing circuitry within the same package, including an on-chip TMR voltage generator for precise magnetic sensing, a TMR voltage amplifier and comparator plus a Schmitt trigger to provide switching hysteresis for noise rejection, and an open-drain output. An internal band gap regulator is used to provide a temperature compensated supply voltage for internal circuits, permitting a wide range of supply voltages from 3V up to 40V. The TMR1383 draws only 0.6mA resulting in low-power operation. It has fast response, accurate switching points, excellent thermal stability, and immunity to stray field interference. It is available in an SOT23-3 package (P/N TMR1383S).

### Features and Benefits

- Tunneling Magnetoresistance (TMR) Technology
- Low Power Consumption < 0.6mA
- High Frequency Response > 1KHz
- Omnipolar Operation
- In-plane X-Axis sensing
- High Supply Voltages of 40V and 30V Reverse Voltage
- Open-Drain Output
- Excellent Thermal Stability
- High Tolerance to External Magnetic Field Interference

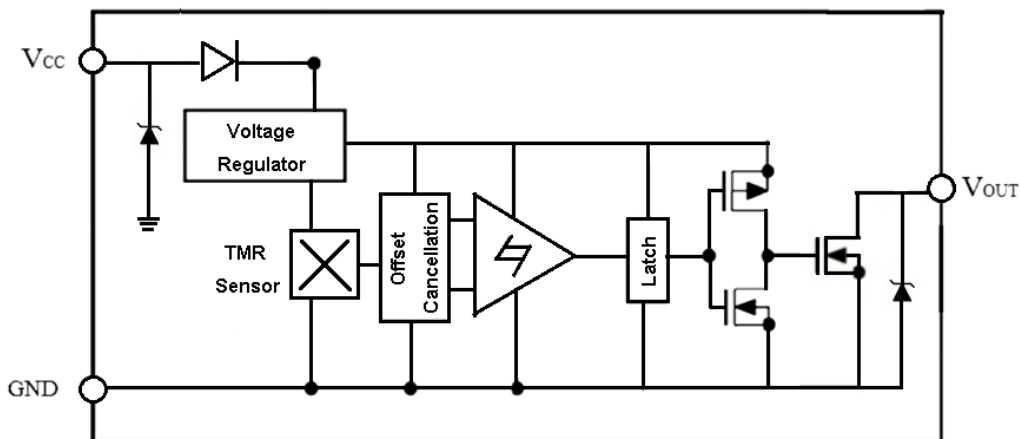
### Applications

- Utility Meters including Water, Gas, and Heat Meters
- Proximity Switches
- Position and Speed Sensing
- Motor and Fan Control
- Power Window



TMR1383S

## Block Diagram



## Pin Configuration

SOT23-3

Pin Name	Pin No.	Pin Function
	SOT23-3	
V <sub>CC</sub>	1	Supply Voltage
GND	3	Ground
V <sub>OUT</sub>	2	Output

## Absolute Maximum Ratings

Parameter	Symbol	Limit	Unit
Supply Voltage	V <sub>CC</sub>	40	V
Reverse Supply Voltage	V <sub>RCC</sub>	30	V
Output Current	I <sub>OUTSINK</sub>	25	mA
Magnetic Flux Density	B	4000	G
ESD level(HBM)	V <sub>ESD</sub>	2	kV
Operating Temperature	T <sub>A</sub>	-40 ~ 125	°C
Storage Temperature	T <sub>stg</sub>	-50 ~ 150	°C

## Electrical Characteristics (V<sub>CC</sub>=24V, T<sub>A</sub>=25°C)

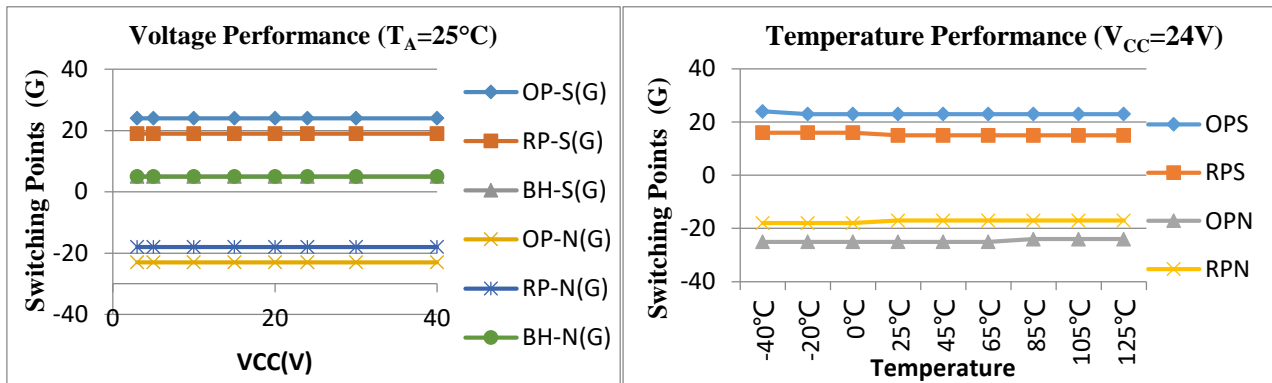
Parameter	Symbol	Conditions	Min	Typ.	Max	Unit
Supply Voltage	V <sub>CC</sub>	Operating	3	24	40	V
Output Stress Voltage	V <sub>stress</sub>				40	V
Output Leakage Current	I <sub>leak</sub>	OUT=High, V <sub>CC</sub> =24V, V <sub>out</sub> =24V		3		μA
Output Turn-off Resistance	R <sub>off</sub>	OUT=High		10		MΩ
Output Low Voltage	V <sub>ol</sub>	OUT=Low, V <sub>CC</sub> =24V, I <sub>sink</sub> =25mV			0.3	V
Output Turn-on Resistance	R <sub>on</sub>	OUT=Low			10	Ω
Supply Current	I <sub>CC</sub>	Output Open	0.4	0.5	0.6	mA
Response Frequency	F			1	100	kHz

Note: A 1kOhm pull-up resistor is connected between VCC and VOUT, and a 0.1μF capacitor is connected between VCC and GND during all tests in the table above.

### Magnetic Characteristics (V<sub>CC</sub>=24V, T<sub>A</sub>=25°C)

Parameters	Symbol	Min	Typ.	Max	Units
Operate Point	B <sub>OPS</sub>		26		G
	B <sub>OPN</sub>		-26		G
Release Point	B <sub>RPS</sub>		19		G
	B <sub>RPN</sub>		-19		G
Hysteresis	B <sub>H</sub>		7		G

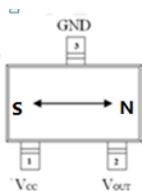
### Voltage and Temperature Characteristics



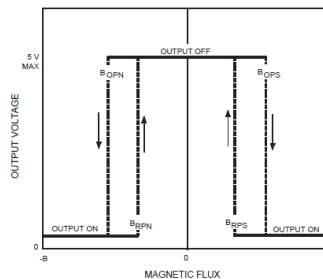
### Output Behavior vs. Magnetic Polarity

Magnetic Polarity	Test Conditions	Output
South	B > B <sub>OPS</sub>	Low (On)
	0 < B < B <sub>RPS</sub>	High (Off)
North	B < B <sub>OPN</sub>	Low (On)
	0 > B > B <sub>RPN</sub>	High (Off)

Note: when power is turned on under zero magnetic field, the output is "High".



Sensing Direction of Magnetic Field

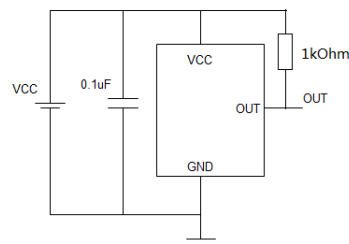


Magnetic Flux

### Application Information

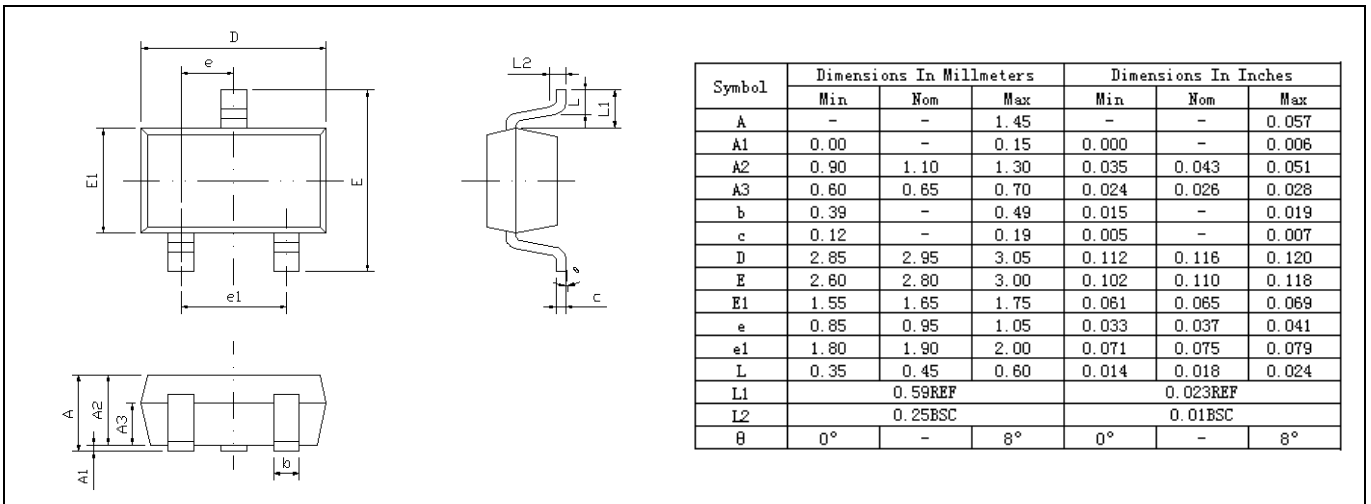
The output of the TMR1383 switches low (turns on) when a magnetic field parallel to the TMR sensor exceeds the operate point threshold |B<sub>OPS</sub>| or |B<sub>OPN</sub>|. When the magnetic field is reduced below the release point |B<sub>RPS</sub>| or |B<sub>RPN</sub>|, the device output goes high (turns off). The difference between the magnetic operate point and release point is the hysteresis B<sub>H</sub> of the device.

It is strongly recommended that an external bypass capacitor be connected in close proximity to the device between the supply and ground to reduce noise. The typical value of the external capacitor is 0.1µF.

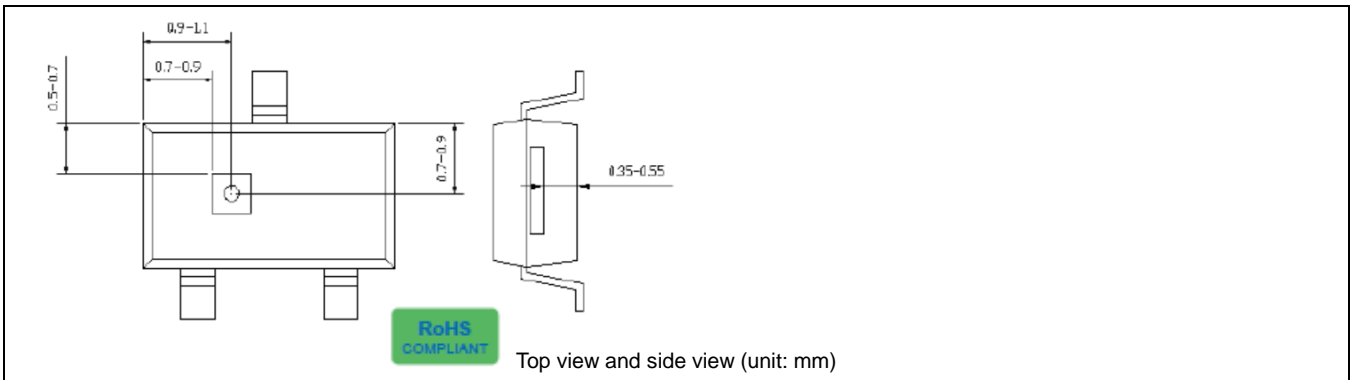


## Package Information

SOT23-3 package drawing



## TMR Sensor Position





**American Electronic Components Inc.**

1101 Lafayette Street, Elkhart, Indiana 46516, United States of America.

Web: [www.aecensors.com](http://www.aecensors.com) Email: [sales@aecensors.com](mailto:sales@aecensors.com)

Toll: 888 847 6552, Tel: +1 574 293 8013

The information provided herein by MultiDimension Technology Co., Ltd. (hereinafter MultiDimension) is believed to be accurate and reliable. Publication neither conveys nor implies any license under patent or other industrial or intellectual property rights. MultiDimension reserves the right to make changes to product specifications for the purpose of improving product quality, reliability, and functionality. MultiDimension does not assume any liability arising out of the application and use of its products. MultiDimension's customers using or selling this product for use in appliances, devices, or systems where malfunction can reasonably be expected to result in personal injury do so at their own risk and agree to fully indemnify MultiDimension for any damages resulting from such applications.