

- Up to 100A / 250VAC Continuous rating
- Single coil & twin coil latching
- Utility meters
- Automotive / Electric vehicle battery
- Small size 40 x 30 x 22mm

RoHS
Compliant ✓

Contacts

Contact arrangement	SPST-NO (1 NO)
Contact material	AgSnO ₂
Max. switching voltage	250VAC / 20VDC
Min. switching current / voltage	500mA/12VDC
Max. continuous current	100A/250VAC
Max. switching current	100A
Max. switching power	25000VA
Initial resistance	≤ 10mΩ, max. at 0.1A/6VDC

Coil

Rated voltage	9...48VDC
Operating range of supply voltage	See table 1
Rated power consumption	single coil 1.2W
	twin coil 2.4W

Insulation

Insulation resistance	>1000MΩ at 500VDC, 50%RH
Dielectric strength	coil to contact 4000Vrms, 1 min (50Hz)
	between open contacts 1800Vrms, 1 min (50Hz)
	Creepage & clearance 8mm

General Data

Operating time	max.	30ms
Release time	max.	30ms
Electrical life	ops.	6 x 10 ³ (at rated current / voltage)
Mechanical life	ops.	5 x 10 ⁵

Environmental

Ambient temperature	operating	-40 to +70°C (Class F)
	storage	-40 to +70°C
Humidity		98%RH, 40°C
Shock resistance	functional	100m/s ² , 11ms
	destructive	1000m/s ²
Vibration resistance		DA 1.5mm 10-55Hz
Dimensions	L x W x H	40 x 30 x 22mm
Weight	approx.	≤ 60g

Ordering Code

D G 7 4 - 3 0 2 1 - 7 1 - T L 1 2 -

Series

Contact material

30: AgSnO₂

Contact arrangement

21: SPST-NO (1 NO) *

31: SPST-NC (1 N/C) *

As delivered condition *

Environmental protection

7: In cover, dust cover - IP54

Mounting & terminations

1: PCB coil terminals & + weld terminals for contacts

Straight power terminals

2: PCB coil terminals & + weld terminals for contacts

Bent power terminal

Mounting & terminations

Blank: Standard

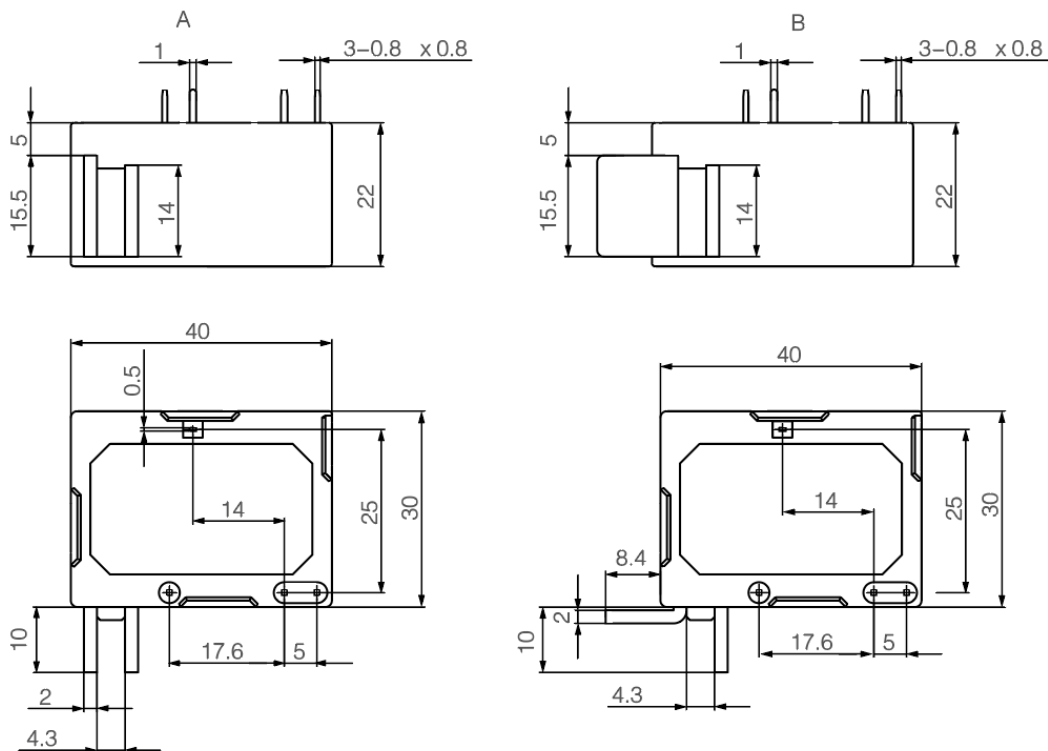
P***: Custom (***) = unique identifier

DC Coil Data					Table 1	
Coil code		Nominal voltage (VDC)	Coil resistance $\Omega \pm 10\%$		Must operate voltage (VDC)	Operate pulse length
Single Coil	Twin Coil *		Single Coil (1.2W)	Twin Coil * (2.4W)		
SL09	TL09	9	67.5	34+34	≥ 6.75	100ms
SL12	TL12	12	120	60+60	≥ 9	
SL24	TL24	24	480	240+240	≥ 18	
SL48	TL48	48	1920	96+96	≥ 36	

* NB: Latch & Reset coils must not be powered simultaneously.

Overall Dimensions mm

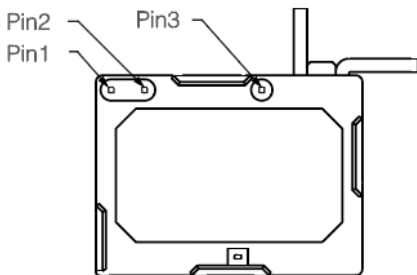
Fig. 1



Terminals are highly customizable. Contact factory for availability and options.

Wiring Diagrams

Fig. 2



Pin 3 not fitted for single coil latch

NB: Operate & Reset coils must not be powered simultaneously.